

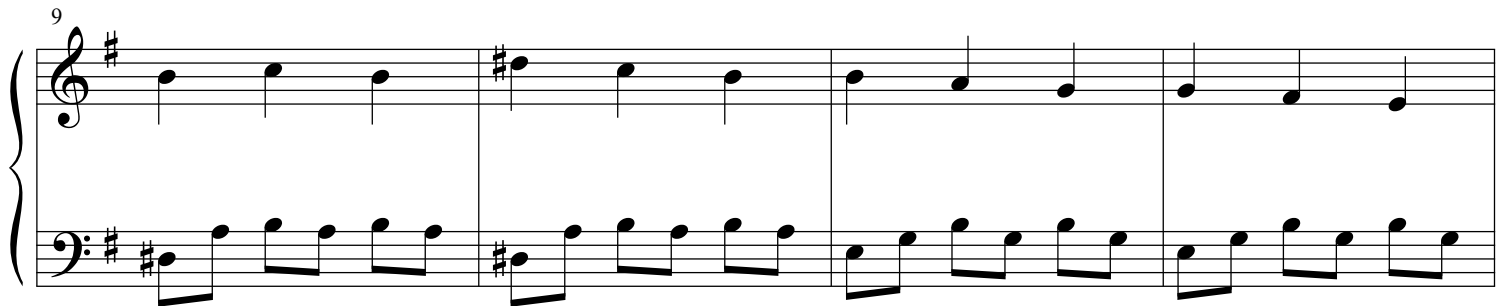
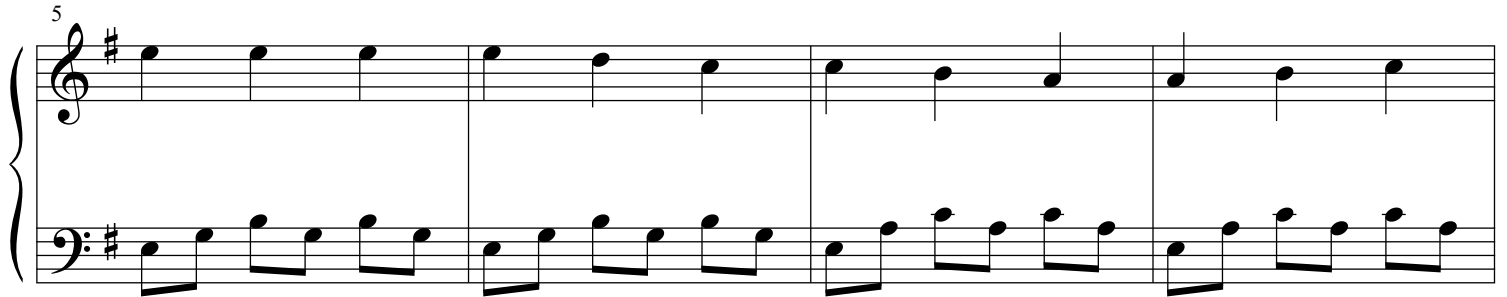
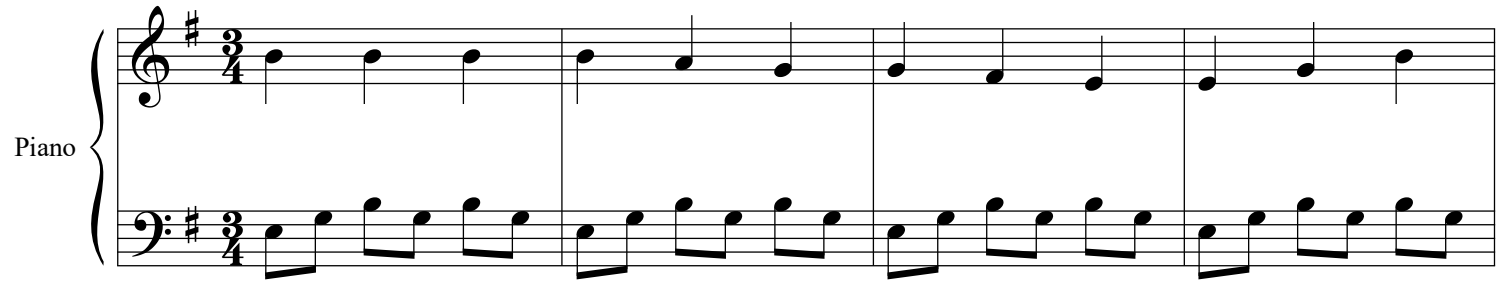
# Romance De Amoure

Broken Cords

Anonymous  
arr. by Vibhas

♩ = 180

Piano



17

2 of 2

This system contains measures 17 through 20. The key signature is three sharps (F#, C#, G#). The melody in the treble clef consists of quarter notes: F#4, G#4, A4, B4, A4, G#4, F#4, and a final measure with a quarter rest followed by a half note F#4. The bass line in the bass clef consists of eighth notes: F#3, G#3, A3, B3, A3, G#3, F#3, and a final measure with a quarter rest followed by a half note F#3. The system is marked '2 of 2'.

21

This system contains measures 21 through 24. The melody in the treble clef consists of quarter notes: F#4, G#4, A4, B4, A4, G#4, F#4, and a final measure with a quarter rest followed by a half note F#4. The bass line in the bass clef consists of eighth notes: F#3, G#3, A3, B3, A3, G#3, F#3, and a final measure with a quarter rest followed by a half note F#3.

25

This system contains measures 25 through 28. The melody in the treble clef consists of quarter notes: F#4, G#4, A4, B4, A4, G#4, F#4, and a final measure with a quarter rest followed by a half note F#4. The bass line in the bass clef consists of eighth notes: F#3, G#3, A3, B3, A3, G#3, F#3, and a final measure with a quarter rest followed by a half note F#3.

29

This system contains measures 29 through 32. The melody in the treble clef consists of quarter notes: F#4, G#4, A4, B4, A4, G#4, F#4, and a final measure with a quarter rest followed by a half note F#4. The bass line in the bass clef consists of eighth notes: F#3, G#3, A3, B3, A3, G#3, F#3, and a final measure with a quarter rest followed by a half note F#3.